



**Next.OS**<sup>TM</sup>  
Powered by **Next.Education**

# RELEASE NOTES

December  
2025

**16+ Features**



# Contents

## Release Highlights (5)

03

## New Features (4)

4-6

### 1. Examination 4

#### 1.1. Exam Setup Guide 4

### 2. User Account Management 4-5

#### 2.1. Parent Activation Guide 4

### 3. Communication 5

#### 3.1. Chat Monitor 5

### 4. Chat with Support 6

#### 4.1. Chat with Support 6

## Improvements (12)

7-10

### 1. Examination 7

#### 1.1. Marks Entry Page - Enhancement 7

#### 1.2. Rank Based on Obtained Marks 7

#### 1.3. Show Hyphen(-) for Term-Total 7

### 2. Admission 8-9

#### 2.1. Age Auto Calculation for Admission 8

#### 2.2. Purpose of Admission Category Added 8

#### 2.3. Option to Modify Closed Online Enquiry Message 8

#### 2.4. Online Enquiry Field Configuration - Enhancement 9

### 3. Student 9

#### 3.1. Student Document Checklist Report - Enhancement 9

### 4. Fee 9

#### 4.1. Daily Collection Report - Enhancement 9

### 5. Attendance 10

#### 5.1. Attendance Tile on Dashboard - Enhancement 10

#### 5.2. Attendance Register Report - Enhancement 10

### 6. LMS 10

#### 6.1. PDF Viewer Changes in (Mobile App) 10

The listed index is clickable.

# Release Highlights

Dear Educators,

We're pleased to share the NextOS December release updates.

We're continuously working to make NextOS better—so you can accomplish tasks more easily, make smarter decisions, and breeze through your daily work.

These release notes will keep you informed, help you explore new features, and ensure you're getting the most out of what's new.

You can always access these updates directly from your NextOS login:

Left Menu > Help Icon > What's New in NextOS

Please find below some of the highlights of this release.

01

## Exam Setup Guide

- One guide, all steps — direct page links and help article included.
- Makes report card publishing smooth, structured, and stress-free.

[know more...](#)

02

## Parent Activation Guide

- Brand-ready Parent Activation Guide now just a click away.
- Helps parents get started on the NextOS app quickly and confidently.

[know more...](#)

03

## Chat Monitor

- Add monitors to chats for real-time visibility and quality control.
- Helps schools ensure conversations stay compliant and well-managed.

[know more...](#)

04

## Chat with Support

- Admins can now chat directly with support for faster query resolution.
- Ask, clarify, and resolve without waiting on calls or tickets.

[know more...](#)

05

## Daily Collection Report - Enhancement

- Application and Registration fees now shown separately in the report.
- Gives accountants quick clarity on collection totals.

[know more...](#)

We've rolled out exciting new features to give you more control and flexibility in managing your day-to-day work on NextOS.

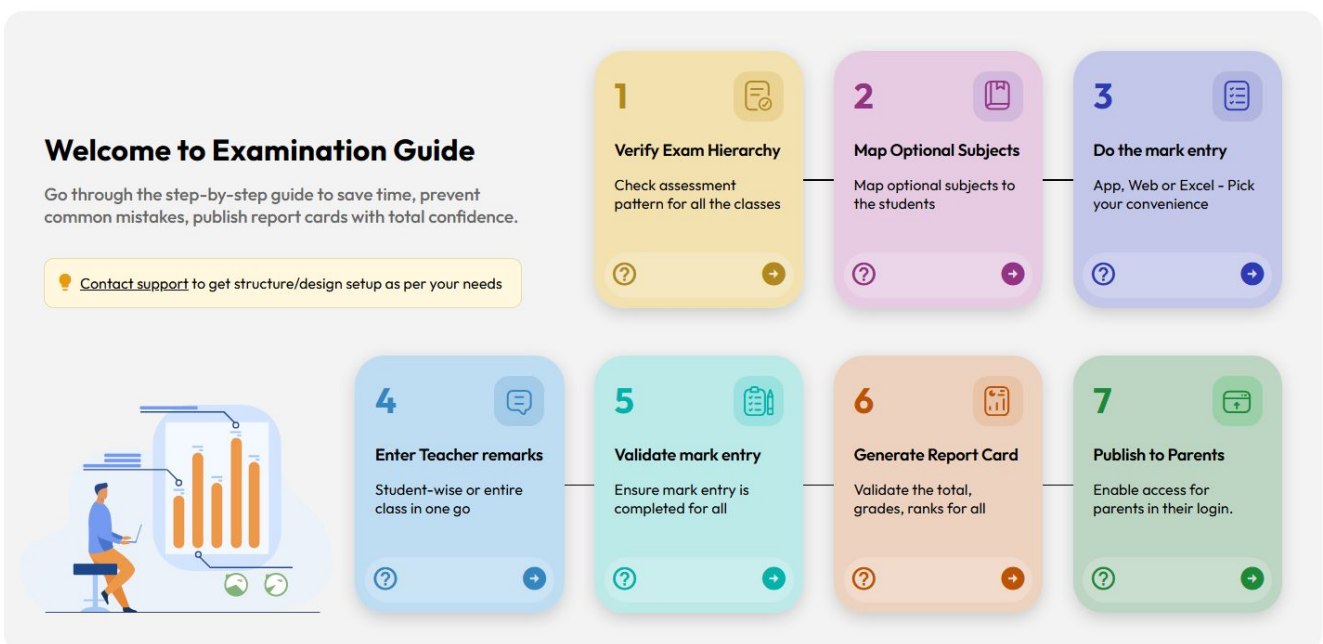
## 1. Examination

### 1.1 Exam Setup Guide

**What's New :** A new Exam Setup Guide page has been introduced to help teachers and exam coordinators follow the correct steps for Report Card publishing. Each step includes direct links to the relevant transaction pages along with a help icon that opens the related help-center article.

**Benefit :** Improves understanding of the examination workflow after exam structure setup and helps exam coordinators publish report cards smoothly and confidently, especially during exam season. Step-wise help articles guide users on how to use each transaction page correctly.

**Path :** *Student > Examination > Exam Setup Guide*



## 2. User Account Management

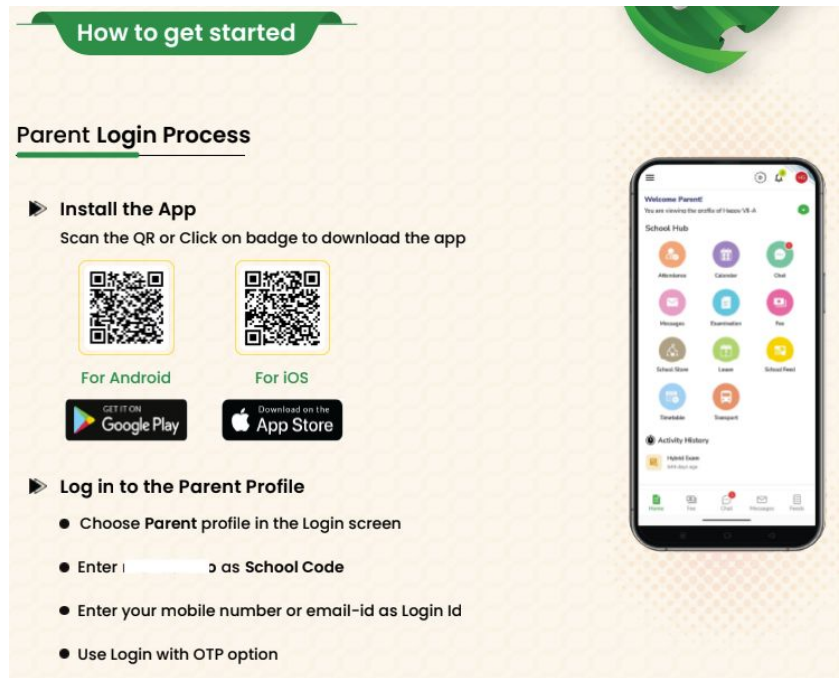
### 2.1 Parent Activation Guide

**What's New :** Schools can now download a Parent Activation Guide (PDF) from the User Account Management page. This is a dynamic, school-specific document that automatically includes the school's name, logo, app download QR code, and school code (where applicable).

The guide also features a short introduction from the school and two simple sections: Why get the app and How to get started. Schools can easily share this PDF with parents.

**Benefit :** Makes parent onboarding simple and effective, helping parents understand the value of the NextOS mobile app and start using it quickly.

**Path :** *Settings > Administration > School Setup > User Account Management > Parents > Download Parent Guide*



### 3. Communication

#### 3.1 Chat Monitor

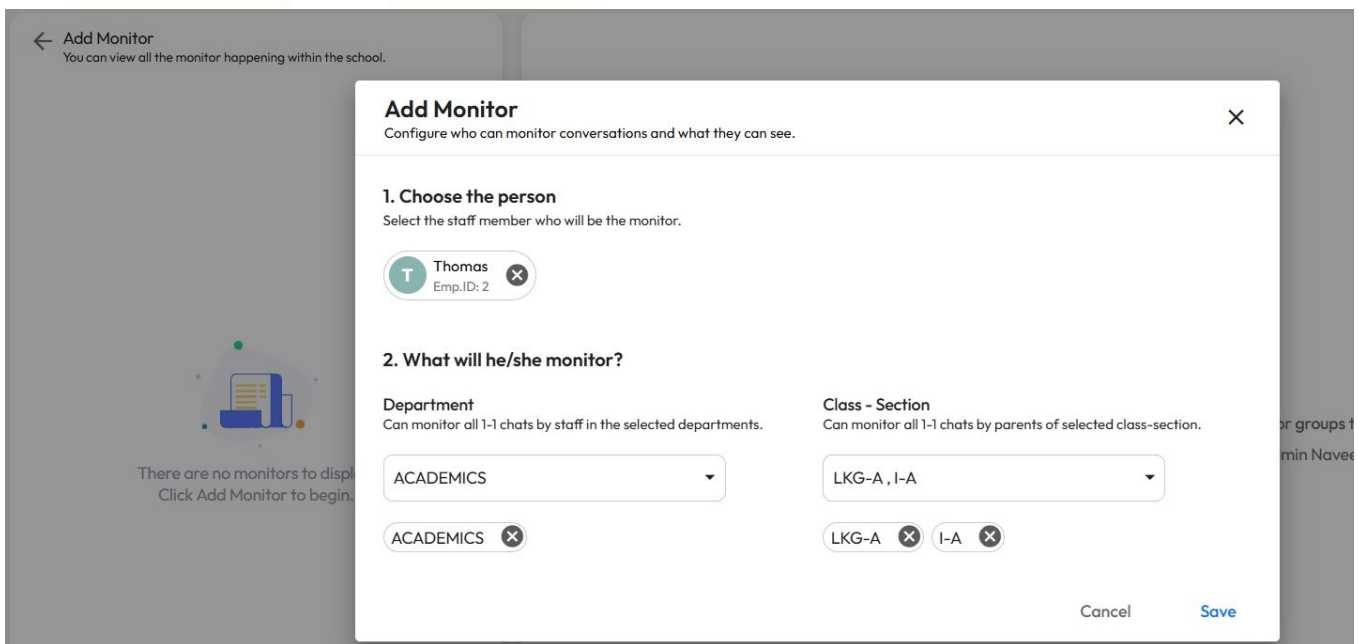
**What's New :** All chat conversations can now be monitored by Admins, Principals, and assigned Chat Managers. In addition:

- Group Managers or Chat Managers can add specific monitors to a group.
- Admins can assign staff as monitors for all one-to-one conversations within a class or department.

*Note: This feature is currently available on the web and will be available on the mobile app soon.*

**Benefit :** Helps schools maintain oversight and quality control by allowing additional staff—beyond admin or principal roles—to monitor assigned conversations and keep a bird's-eye view where needed.

**Path :** Communication > Chat > Click Three Dots > Add Monitor > Select Department or Class-Section to monitor



## 4. Chat with Support

### 4.1 Chat with Support

**What's New :** The Chat with Support option is now enabled for school admins on the web interface. Admins can directly engage in a two-way chat for faster resolution of NextOS-related queries.

When a chat is initiated, the system automatically shares the user name, school name, and current page URL with the support team for quicker context.

Chat Support is available Monday to Saturday, 8:00 AM to 6:00 PM

**Benefit :** Allows admins to raise queries directly to support agents, with most issues being resolved in under 2 minutes.

**Path :** *Home > Support Icon > Chat with Support*

**NEW FEATURES**

**General** Teacher Department Administration Management Analytics Hierarchy

**Quick Links**  
Links are based on frequent links accessed.

Frequently Used

- Staff Profile
- Inbox
- Browse Library
- LMS

Your Favourite Links

Raise a Ticket

Chat with Support

**My Attendance** 2025-26

Total working days: 223 Holidays: 60

Present 47 Absent 158 Half-day 0 Not Marked 13 Others 5

**JANUARY 2026**

Sun 28 Mon 29 Tue 30 Wed 31 Thu 1 Fri 2 Sat 3

4 5 6 7 8 9 10

11 12 13 14 15 16 17

18 19 20 21 22 23 24

25 26 27 28 29 30 31

1 2 3 4 5 6 7

**Leave Balance** Click on the leave types to apply.

Casual Leave 0.0 Comp Off 5.0 Earned Leave 12.0 Paternity Leave 0.00

**NLP Support**  
Typically replies within 8 minutes

Next Education

Hi, I would like to know about Chat Monitor

Wed, 11:03 AM

Next Learning Platform

Thank you for contacting NLP Whatsapp chat forum and we are happy to help you! For security purposes, I need to verify your identity before we continue, request you to kindly share the below details.

Reply here...



## 1. Examination

### 1.1 Marks Entry Page - Enhancement

**Improvement :** All optional subjects will now be displayed on the Marks Entry page regardless of student mapping. For each optional subject selected, current count of mapped students is shown along with the link to Optional Subject Mapping screen.

**Impact :** Prevents confusion for teachers when subjects appear missing and helps them understand if no or fewer students are mapped for a specific optional subject.

**Locate :** *Student > Examination > Marks Entry > Apply Filters > Select Optional Subject*

### 1.2 Rank Based on Obtained Marks

**Improvement :** A new Obtained Marks option has been added to the Rank Configuration page. With this, schools can now calculate and display ranks on the report card based on actual obtained marks(marks/percentage).

By default, the existing Scaled Marks configuration is selected, but schools can switch to Obtained Marks as needed.

**Impact :** Provides schools with greater flexibility to generate ranks according to their preferred method, while keeping ranking simple and transparent

**Locate :** *Settings > Student > Examination > Rank Configuration > Select Yearly, Term or Assessment Wise Ranking*

### 1.3 Show Hyphen(-) for Term-Total

**Improvement :** Two new settings have been added at the Term and Subject levels in the Exam Hierarchy page:

- “Show Hyphen for Term-Total if student absent in any subject”  
When enabled, if a student is absent in any subject, the Term Total (marks, grade, percentage, and rank) will be shown as a hyphen (-) instead of being computed.
- “Show Hyphen in all totals for absentees of this subject”  
When enabled, if a student is absent in any activity for that subject, the Subject, Assessment, and Term totals will not be computed and will be displayed as a hyphen (-).

**Impact :** Ensures accurate and transparent reporting for absentee scenarios, preventing misleading totals and improving clarity for teachers, parents, and students.

**Locate :** *Settings > Student > Examination > Exam Hierarchy > Select Class > Select Term > Three Dots > Edit > Toggle Setting OR Select Subject > Three Dots > Edit > Proceed & Toggle Setting*

## 2. Admission



### 2.1 Age Auto Calculation for Admission

**Improvement :** A new option “Age as on specific date” has been added under Age Criteria settings in Admissions. With this enabled, the system will auto-calculate the student’s age on the specified reference date and display it on the Admission Form PDF.

For example: If the DOB is 11-08-2022, and the reference date is 01-04-2026, the PDF will show the age as 3 years 5 months.

**Impact :** Ensures the correct age is printed on admission documents, giving schools greater accuracy and compliance—especially where age must align with standard admission guidelines

**Locate :** *Settings > Student > Admission > Age Criteria > Edit > Age as on specific date > Enter Reference Date*

### 2.2 Purpose of Admission Category Added

**Improvement :** A new field, “Purpose of Admission Category,” has been introduced. Schools can now set the purpose as Classification, Fee, Document, or Fee & Document.

If the purpose is set as Classification, the admission category can be modified for an applicant independent of the admission stage or fee collection status.

**Impact :** Previously, the system did not allow updating the admission category once any fees were collected for Application or Registration. Now, schools can modify the admission category as long as the collected fee type is mapped to that category, offering greater flexibility during the admission process.

**Locate :** *Settings > Student > Admission > Admission Category > Purpose of Admission Category*

### 2.3 Option to Modify Closed Online Enquiry Message

**Improvement :** Schools can now customize the message displayed when Online Admission is closed. This helps guide parents who have submitted an enquiry, and looking for next steps. If not customized, the system will continue to show the default message: “Online Admissions Are Closed.”

**Impact :** Gives schools more control over communication during closed admission periods and helps parents receive the right guidance, improving overall clarity and support.

**Locate :** *Settings > Student > Admission > Admission Process > Disable Online Admission > Enter your Custom Message*





## 2.4 Online Enquiry Field Configuration - Enhancement

**Improvement :** Schools can now configure additional standard fields in the Online Enquiry form. Newly supported fields include Category, Caste, Sub Caste, Birth Place, Mother Tongue, Identification Marks, and Remarks. Previously, only a limited set of fields was available for configuration.

**Impact :** Gives schools more control over the data they collect and allows them to include or exclude fields based on their requirements, making the online enquiry experience more convenient and relevant for parents.

**Locate :** *Settings > Student > Admission > Admission Form Editor > Online Enquiry Form > Under “Show in Form” column > Toggle relevant fields*

## 3. Student

### 3.1 Student Document Checklist Report - Enhancement

**Improvement :** A new option has been added to allow schools to choose the type of documents to include in the Student Document Checklist Report.

**Impact :** Helps schools customize the report to view the status of only the selected documents, making tracking more focused and efficient.

**Locate :** *Student > Student List & Reports > Student Reports > Student Document Checklist Report > Click “Check Student Documents*

## 4. Fee

### 4.1 Daily Collection Report - Enhancement

**Improvement :** The Daily Collection Report now displays Application Fee and Registration Fee separately under the Fee Type-wise transaction details table.

**Impact :** Makes it easier for accountants to quickly identify and analyze the total amounts collected for application and registration fees.

**Locate :** *Finance > Fee > Fee Reports > 1.7 Daily Collection Report*

## 5. Attendance

### 5.1 Attendance Tile on Dashboard - Enhancement

**Improvement :** The Today's Attendance widget on the Admin Dashboard now displays the Total Student Count and Present Count. Earlier, only attendance percentages for students and staff were shown.

**Impact :** Helps admins quickly identify the number of absentees at a glance, improving visibility and daily monitoring.

**Locate :** *Home > Administrator > Today's Attendance Widget*

### 5.2 Attendance Register Report - Enhancement

**Improvement :** The Attendance Register Report now displays a Total Working Hours column for each staff member, calculated based on biometric or geofacial punches.

**Impact :** Provides detailed visibility into staff working hours, helping accountants make more informed decisions during payroll processing.

**Locate :** *Staff > Staff Attendance > Attendance Report > Attendance Register Report*

## 6. LMS

### 6.1 PDF Viewer Changes in Mobile App

**Improvement :** PDFs are now displayed in full-screen mode in the mobile app, with the ability to view one page at a time. A Next icon and scroll navigation are provided to easily move between pages.

**Impact :** Allows students to read documents more comfortably by utilizing the entire screen for content.

**Locate :** *NextOS App > Study Hub (Home) > My Courses > Select Subject > Chapter > Resources > Open PDF*